

*Pour*

PRELUDES

*pour tous les 12. Tons majeurs  
pour le*

*Fortepiano, ou l'Orgue*

*composés par*

LOUIS VAN BEEETHOVEN.

Œuvre 39.

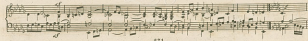
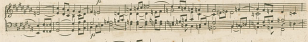
à Leipzig chez A. Kühnel.

*(Bonn et Manique.)*

*B. 5. 4*

I.

A handwritten musical score on aged paper, consisting of five systems of two staves each. The notation is in a historical style, likely 18th or 19th century. The first system is marked with a large 'I.' in the left margin. The music features a variety of note values, including minims, crotchets, and quavers, often grouped with beams and slurs. There are also some rests and dynamic markings. The paper shows signs of age, with some staining and discoloration.



4

A handwritten musical score consisting of five systems of staves. Each system contains two staves, likely representing a treble and bass clef. The notation is dense, featuring many sixteenth and thirty-second notes, often beamed together in groups. There are numerous slurs and ties throughout the piece. The paper is aged and shows some staining. A small number '4' is written in the top left corner. At the bottom center, there is a small, faint number '271'.

271

A page of handwritten musical notation, likely a score for a piano or similar instrument. The page contains five systems of music, each consisting of a treble and bass staff. The notation is dense, featuring many sixteenth and thirty-second notes, often beamed together. There are several dynamic markings, including *ritardando* and *rit.*, and some phrasing slurs. The paper shows signs of age, with some staining and a slightly yellowed tone. The number 276 is written at the bottom center of the page.

II.

The image displays a handwritten musical score on aged paper, organized into two systems. Each system consists of two staves. The notation is written in a cursive, historical style, featuring various note values, rests, and bar lines. The first system begins with a treble clef and a key signature of one flat. The second system starts with a different clef, possibly an alto or bass clef, and a key signature of two flats. The music is densely written, with many beamed notes and complex rhythmic patterns. The paper shows signs of age, including some staining and discoloration.

Handwritten musical score on five systems. Each system consists of a treble clef staff and a bass clef staff. The notation includes various musical symbols such as notes, rests, and bar lines. The piece concludes with the word "FINE" written above the final measure of the bottom staff.